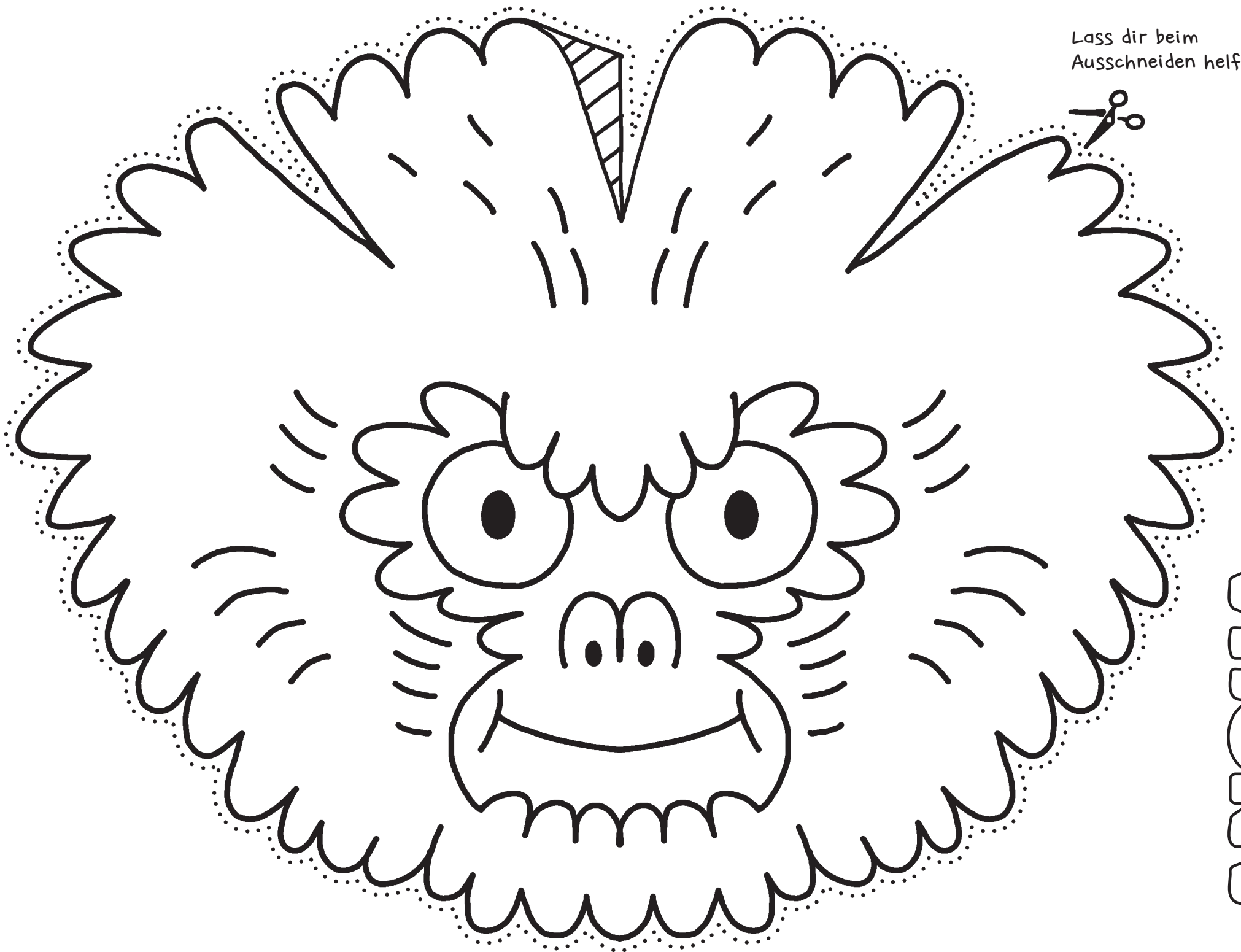
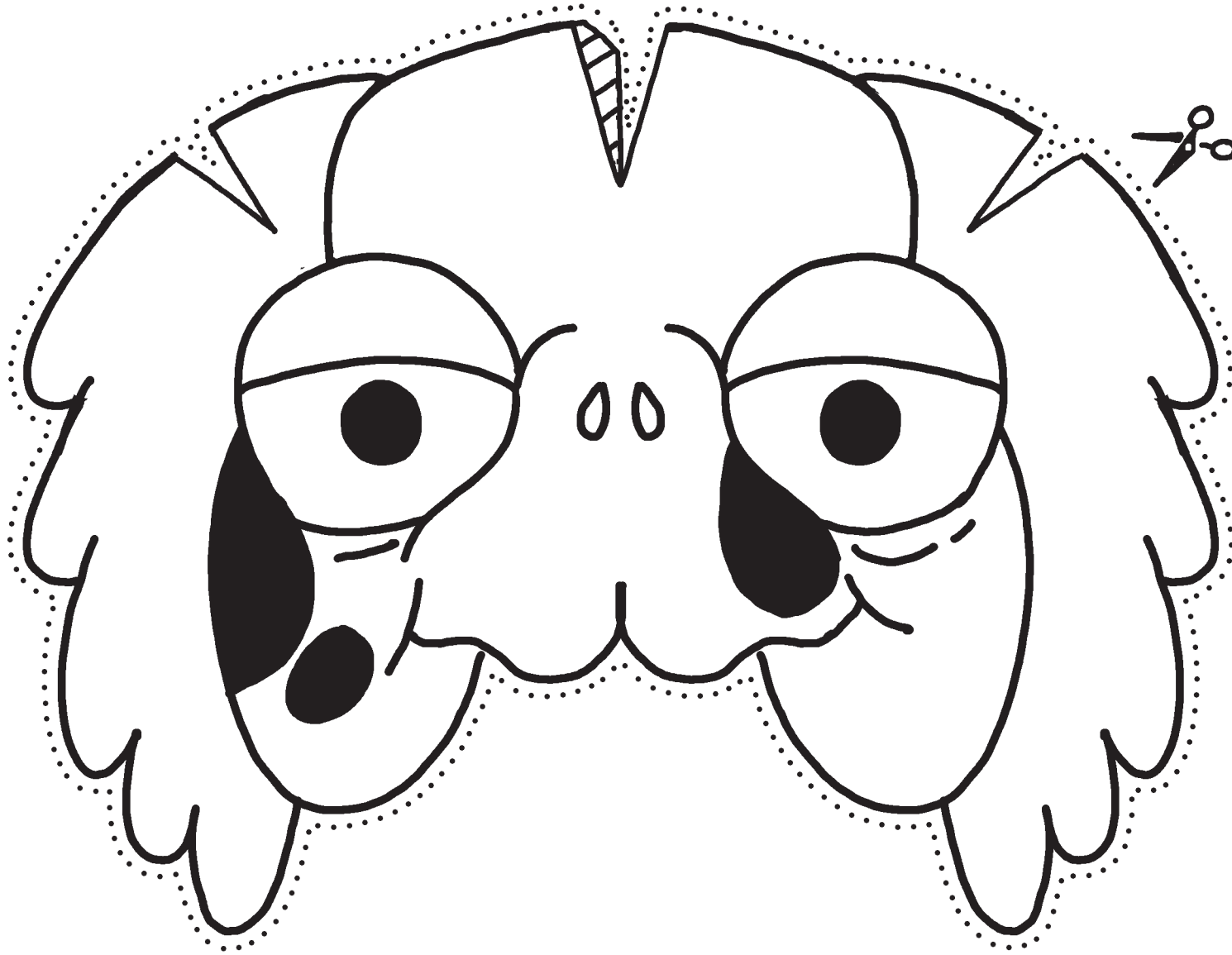


Lass dir beim
Ausschneiden helfen!

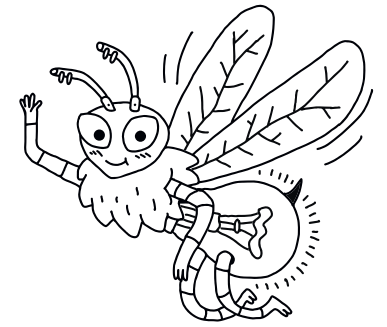
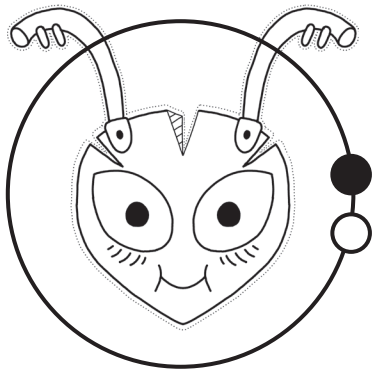


ANOHA

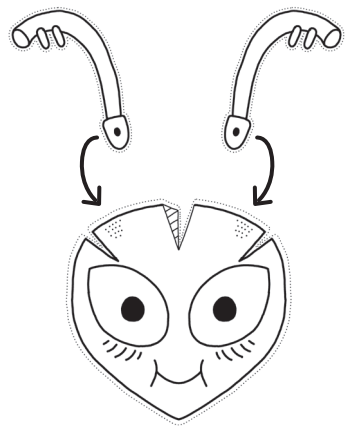
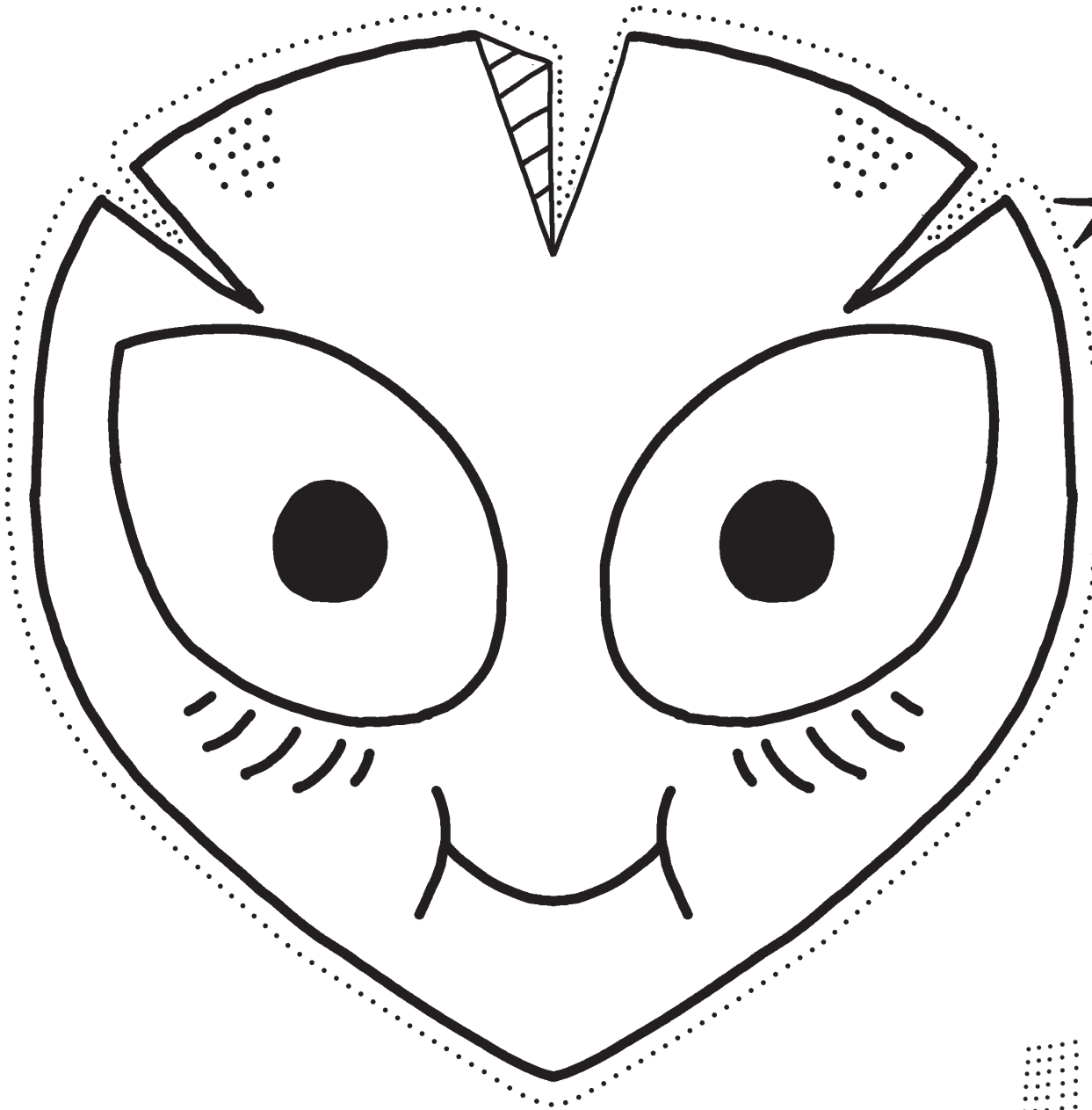
Lass dir beim
Ausschneiden helfen!



ANOHA

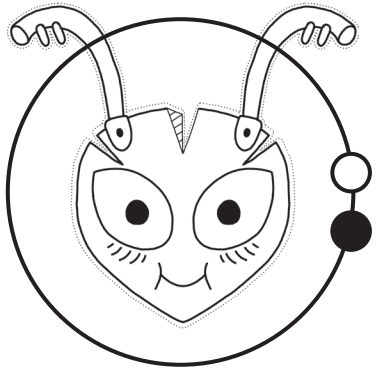


Lass dir beim Ausschneiden helfen!

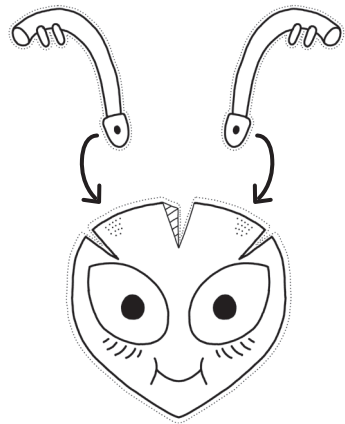
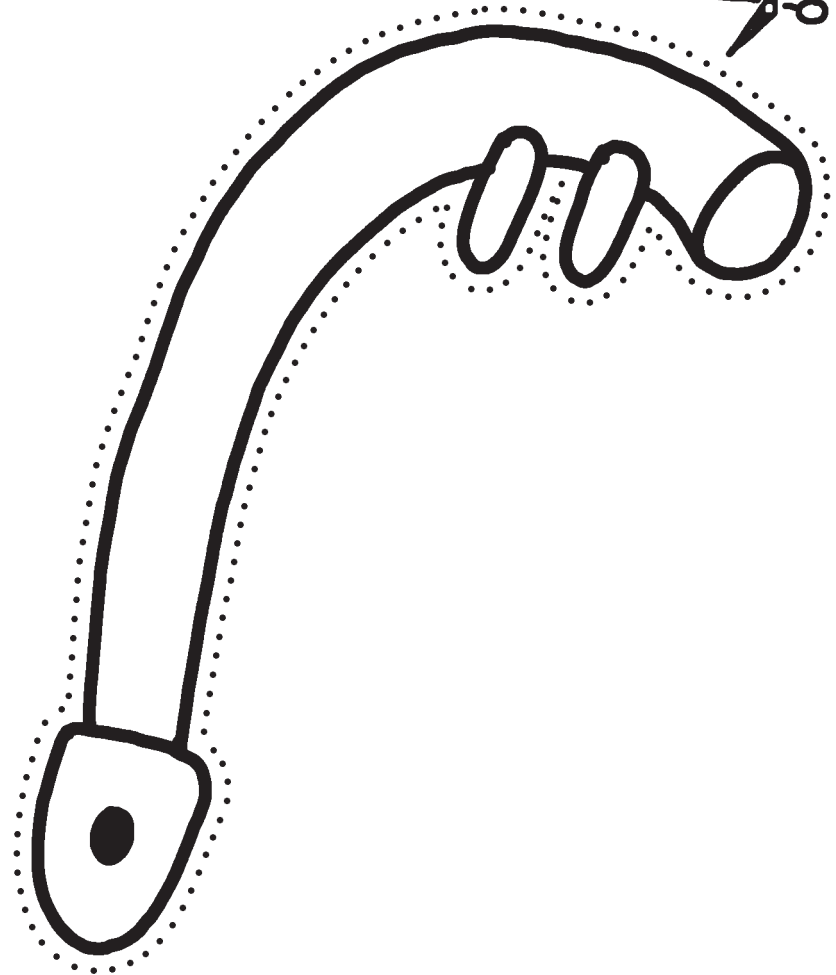
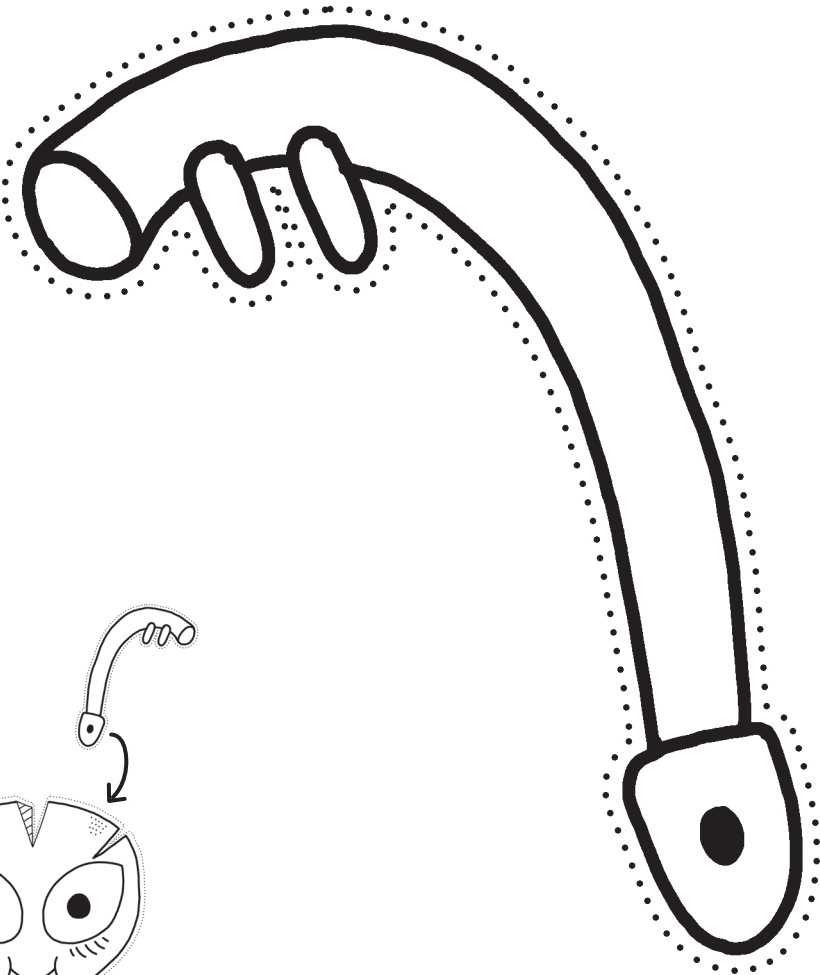


Klebefläche

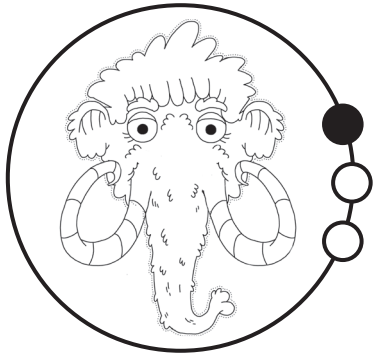
ANOHA



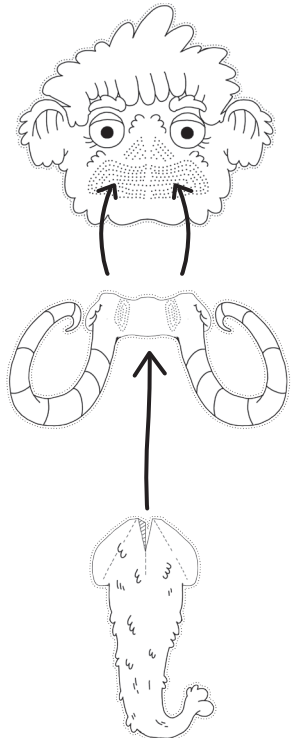
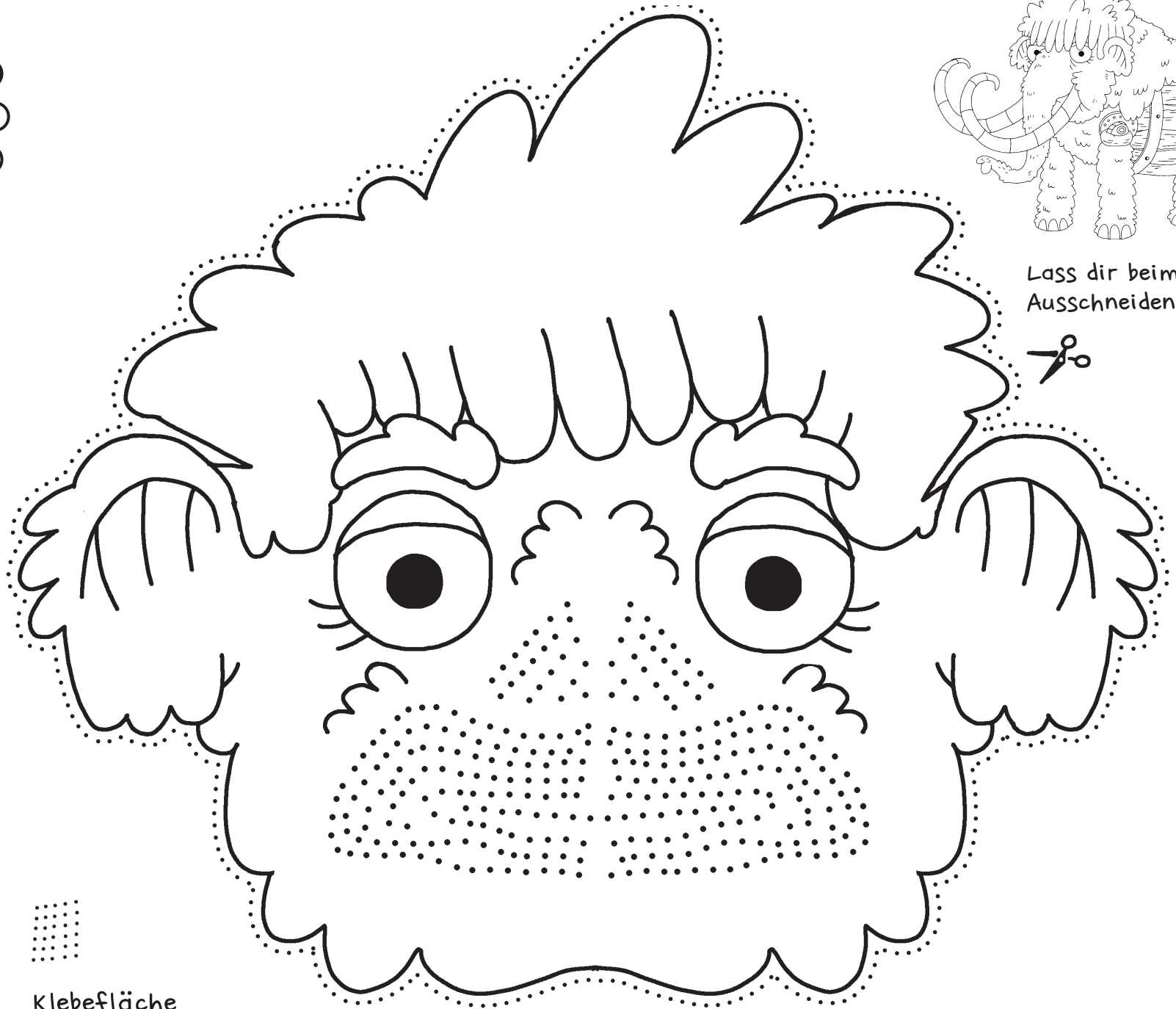
Lass dir beim Ausschneiden helfen!



ANOHA

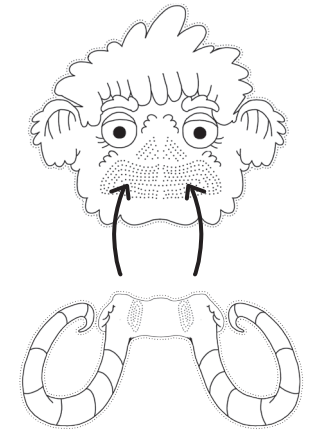
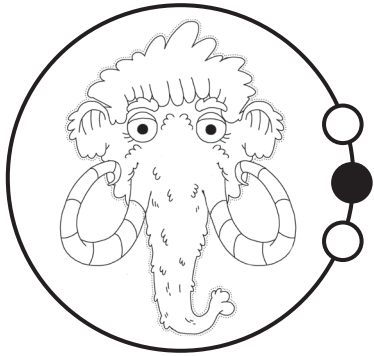


Lass dir beim Ausschneiden helfen!

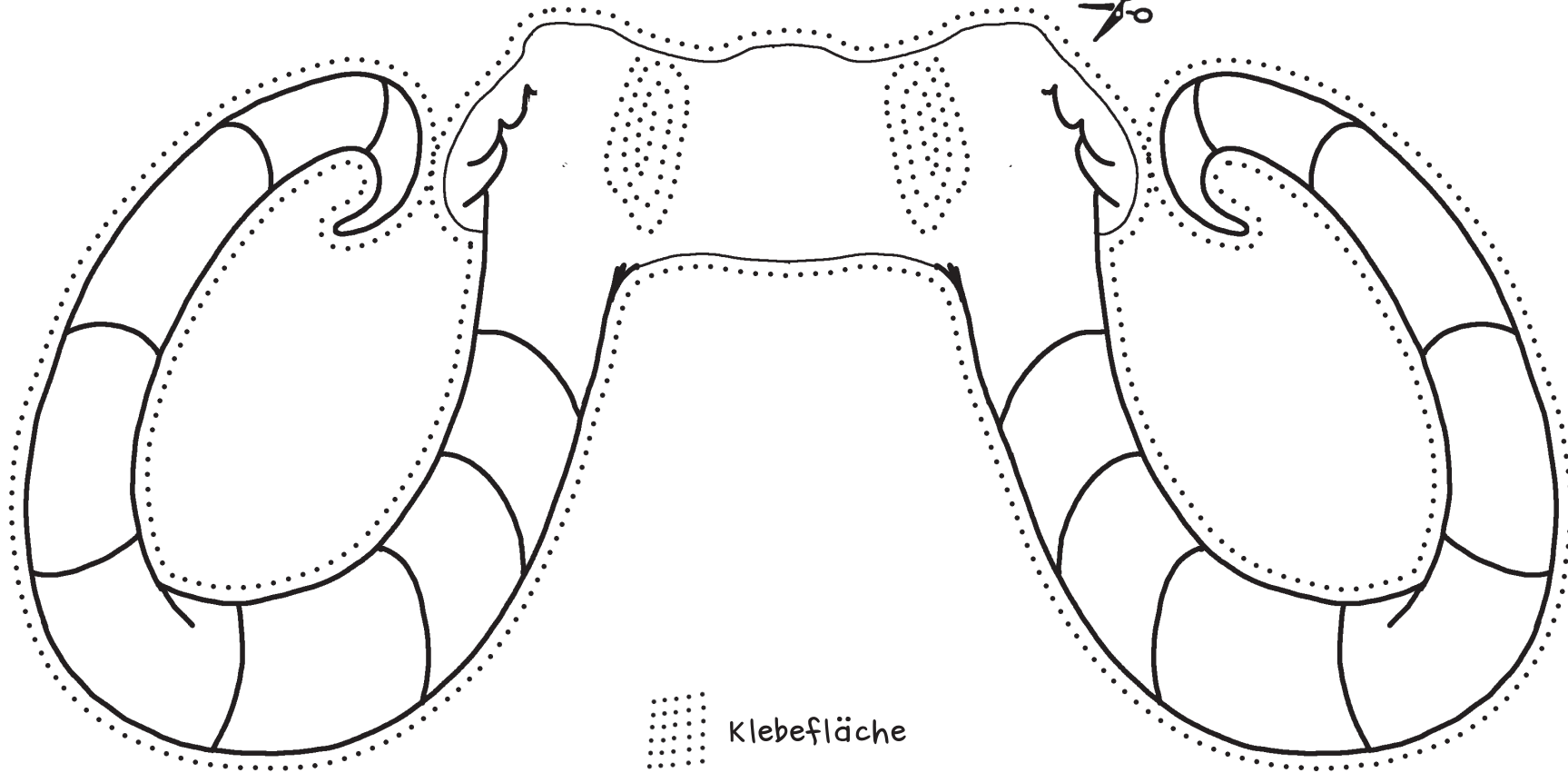


Klebefläche

ANOHA

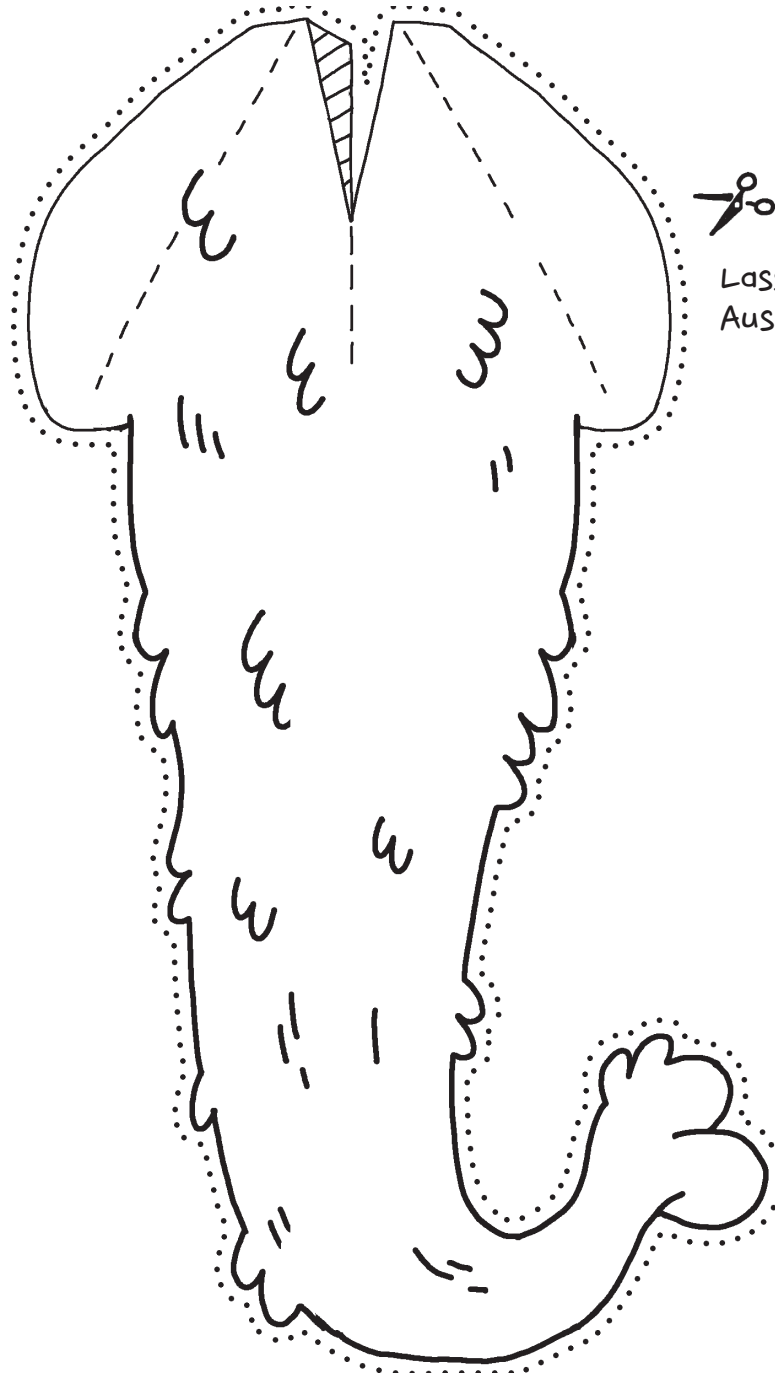
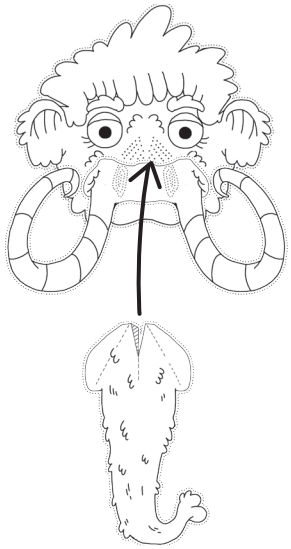
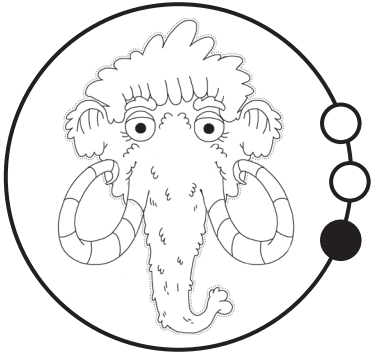


Lass dir beim Ausschneiden helfen!



 Klebefläche

ANOHA



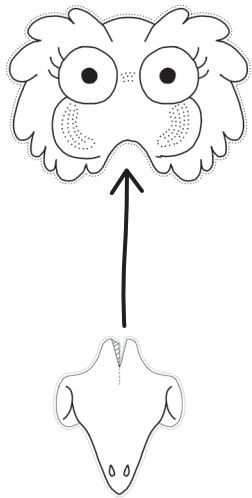
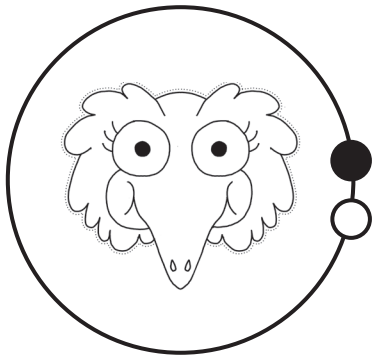
---- Falten



Lass dir beim Ausschneiden helfen!

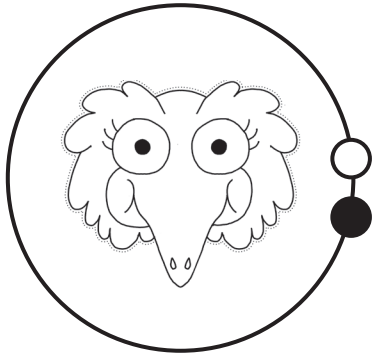
ANOHA

Lass dir beim Ausschneiden helfen!

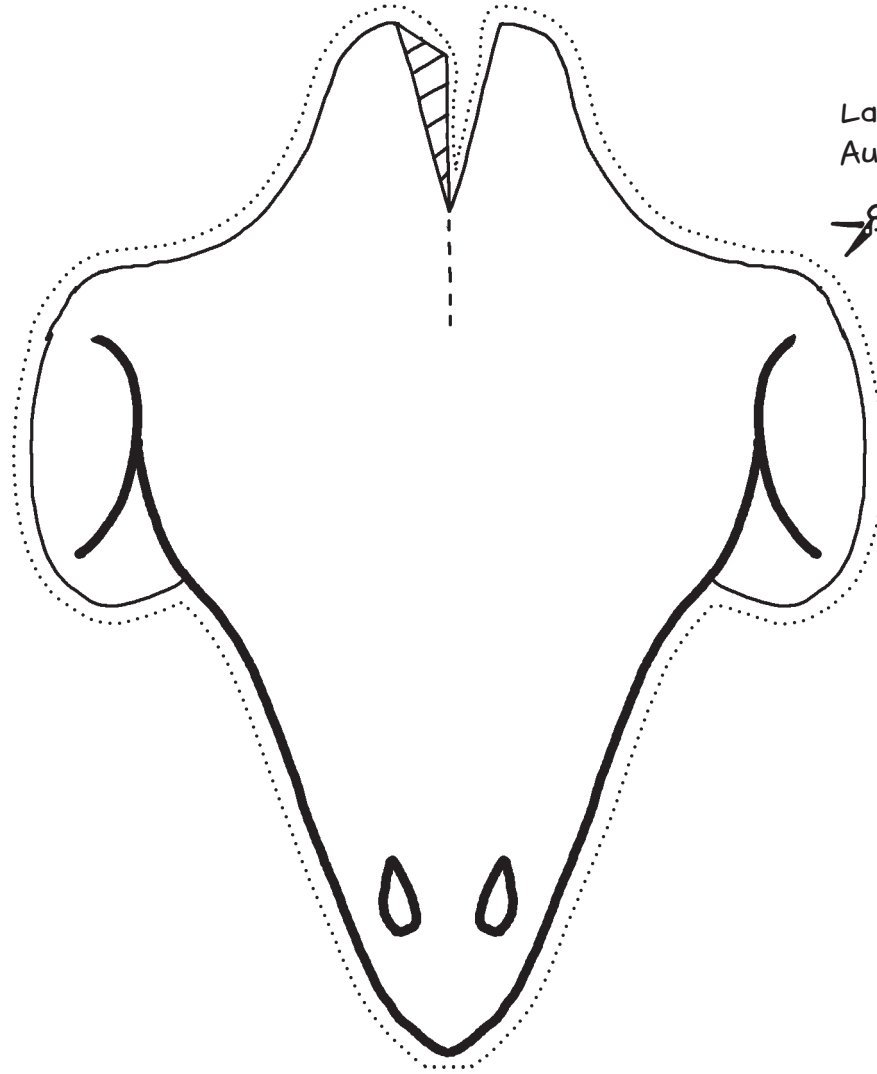


 Klebefläche

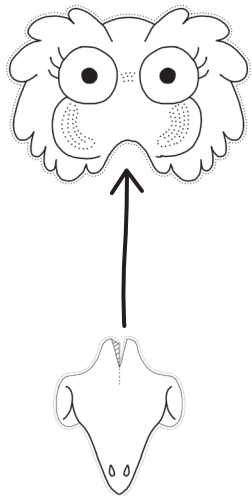
ANOHA



---- Falten

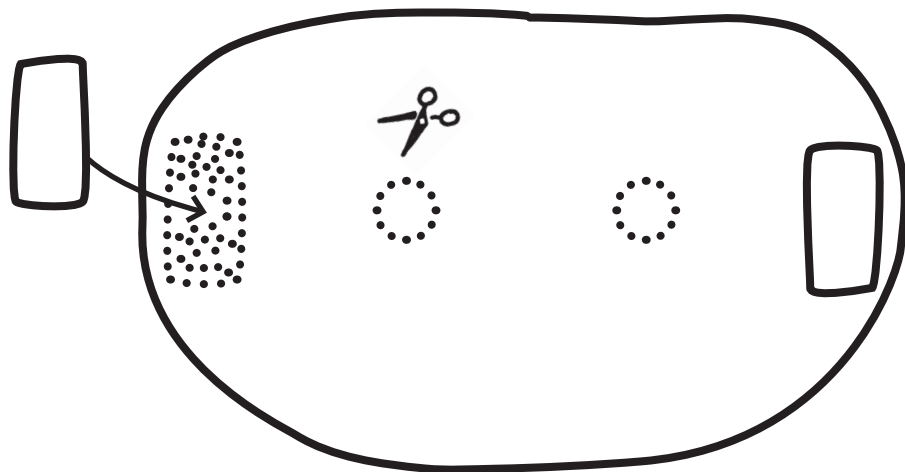


Lass dir beim Ausschneiden helfen!

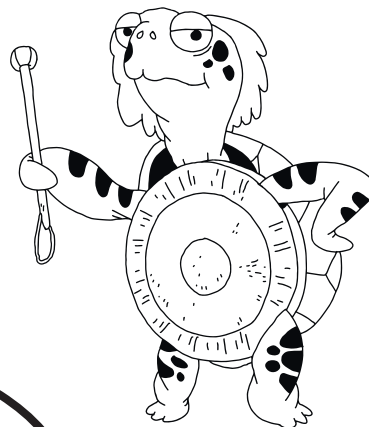


ANOHA

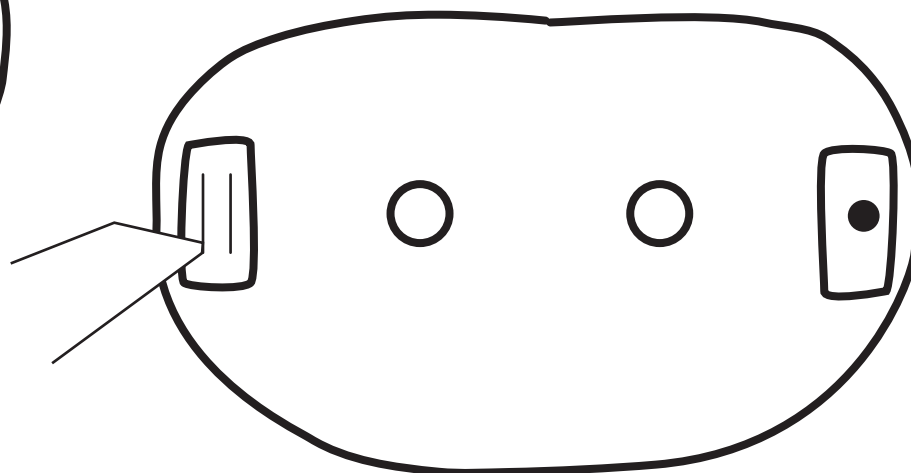
Nach dem Ausmalen und Ausschneiden:
Verstärkungen aus Papier oder Klebeband aufkleben
und Augenöffnungen ausschneiden.



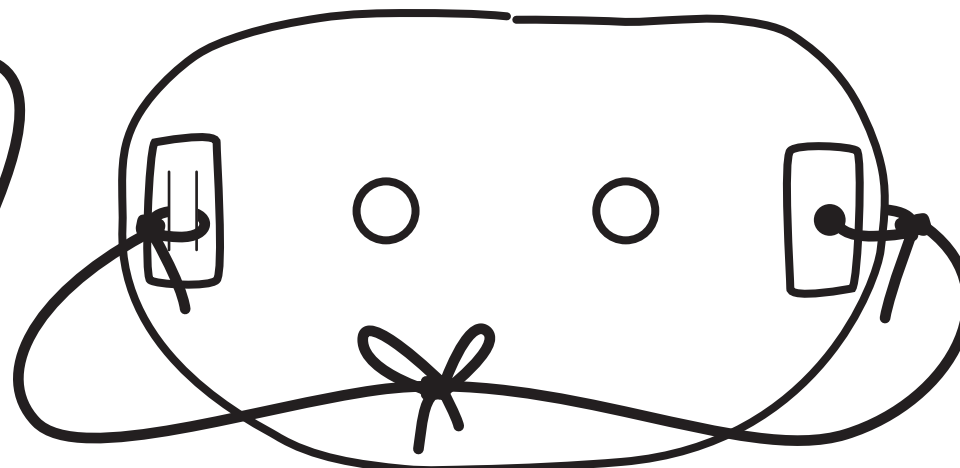
Lass dir beim
Ausschneiden helfen!



Mit dem Cutter auf beiden Seiten
2 Schlitzte oder mit dem Locher
je ein Loch in die Maske machen.



Gummi oder Wollfaden durch
die Schlitzte / Löcher fädeln.



Verknoten - fertig!

ANOHA